

## Improve the performance of your mounter nozzles

SAWA ECO NOZZLE

SC-ENXce



### Improve the maintenance process

- Our original double cleaning combine ultrasonic and vacuum to clean thoroughly inside nozzles.
- It helps in reducing failures of nozzles to suction.

### Eco friendly

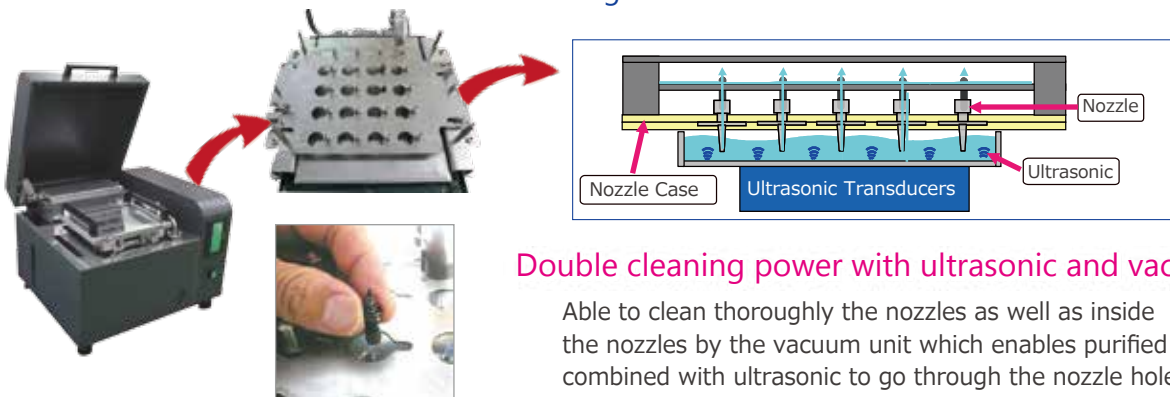
- Use "Purified Water" for regular cleaning.

### Easy Setup clean max. 80 nozzles!

- Just detach the jig with nozzles from your mounter and place it in our nozzle holder.

\*This type of holder for 80 nozzles is available only for YAMAHA mounter YSM40.

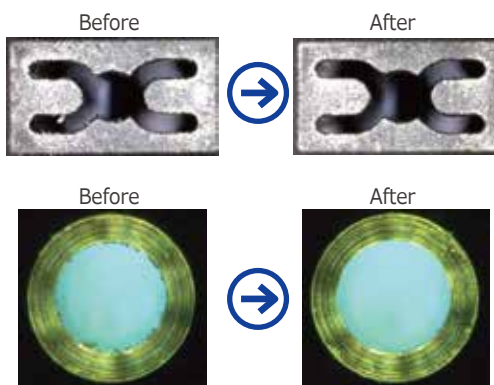
### Cleaning Mechanism



### Double cleaning power with ultrasonic and vacuum!

Able to clean thoroughly the nozzles as well as inside the nozzles by the vacuum unit which enables purified water combined with ultrasonic to go through the nozzle holes.

### Cleaning Ability



Use purified water for regular cleaning.

### Specifications

Product No.	SC-ENXce
Outside dimension	W 500 D 519 H353mm (Including projecting parts)
Weight	28.5kg (Dry weight)
Power	AC100V, 120V, 220V, 240V 50/60Hz 30VA
Ultrasonic	40kHz 9W
Air	0.3MPa 180NL/min
Tank capacity	2 Litter (Initial input 1 Litter)
Cleaning agent	Purified water
Cleaning time	Approx. 5min.
Air vacuuming time	Approx. 5min.

Available for many nozzle types, such as YAMAHA(including  $\Sigma$  series), Panasonic, Fuji, ASM, JUKI and more.

\*For other nozzle types, please contact us.



Contribute to the earth benefit

**SAWA CORPORATION**

2-17-1 TSUDAYAMATE, HIRAKATA-SHI, OSAKA 573-0128, JAPAN

TEL: +81-72-859-7286 FAX: +81-72-859-7287

MAIL: info@sawa-corp.co.jp

URL: <http://www.sawa-corp.co.jp>