

**NEW**

# MASK CONDITION CHECKER

Metal Stencil Opening Inspection Machine

SCI-MCC



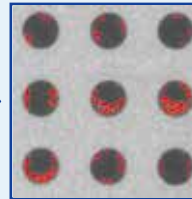
*Is your metal stencil clean ?*

Simple design with low price and easy operation.

Solve problems  
with visualization

Full inspection of solder residue and dust deposit  
on metal stencil openings after the cleaning.

Can not see it because...  
too small  
too many holes  
too busy



It reflects solder residues  
and dust deposit in red color.

Easy installation  
Easy operation

- All the openings in the specified area can be inspected.
- NG point capture can be confirmed.
- Trace for each mask is possible by registering the control number.
- Pre-registration of Garber data is not required.
- Available with 100V power supply.



monitor

Option

Mask tension can be measured as an option.

## Specification

Product No.	SCI-MCC
Outside dimension	W 1300 D 995 H 1,656mm
Weight	180kg
Power / Current	AC100V±10V 50/60Hz 5A
PC / Monitor	OS: Windows10 64bit CPU: core i7 MEM: 8GB HDD: 500GB Monitor: 20 inch FullHD Keyboard (Attached) Mouse (Attached)
Frame dimensions	L 550 × W 650mm L 600 × W 550mm
Inspection area	400×400mm (Maximum size)
Processing speed	1time abput 3minutes (330×250mm area)

Contact us for more information.



**SAWA CORPORATION**

2-17-1 Tsudayamate, hirakata-shi, OSAKA 573-0128, JAPAN  
TEL: +81-72-859-7286 FAX: +81-72-859-7287  
MAIL: info@sawa-corp.co.jp URL: www.sawa-corp.co.jp